

# KARIBAN

**REFERENCE :** K6104

**SIZES :** XS\_S\_M\_L\_XL\_XXL\_3XL

**COMPOSITION :**

Main fabric : Polyamide 228T taslon PU milky coating - 150  
100%polyamide

Main fabric : Polyamide 228T taslon PU milky coating - 150 For  
contrasted hood piping and contrasted inner tab (outer part  
only) 100%polyamide

Mesh : Mesh 75 For hood lining and yokes on lining 100%  
polyester

Lining 2 : Polyester 210T - 60 For lining 100%polyester

**WEIGHT :**

Main fabric : 150 gsm

Main fabric : 150 gsm

Mesh : 75 gsm

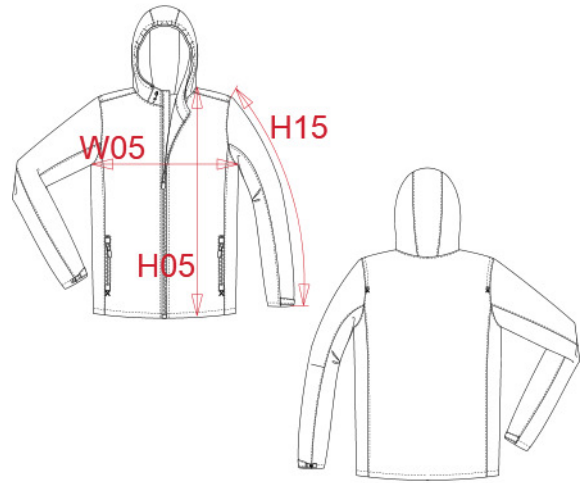
Lining 2 : 60 gsm

**TECHNICAL DETAIL :**

BR: 5000gsm/24h / WP: 3000mm

**ARTICLE WEIGHT :**

520 gr/pc



DESCRIPTION
<b>Français :</b> Veste imperméable unisexe
<b>English :</b> Waterproof jacket
<b>Nederlands :</b> Waterdichte jas
<b>Deutsch :</b> WASSERDICHTE JACKE
<b>Español :</b> Chaqueta impermeable
<b>Italiano :</b> GIACCA IMPERMEABILE
<b>Português :</b> Blusão waterproof

COLORS	PANTONE SERIGRAPHIE
Navy	433C

MEASUREMENT							
Description	XS	S	M	L	XL	XXL	3XL
<b>H05</b> Hauteur totale / Total height	73,50	75,50	77,50	79,50	81,50	83,50	85,50
<b>W05</b> 1/2 largeur poitrine à 1.5cm de l'emmanchure / 1/2 chest width at 1.5cm below armhole	54	57	60	63	66	69	72
<b>H15</b> Longueur manche / Sleeve length	67	68	69	70	71	72	73

CARE LABEL

PACKING	
Box	10 pcs / box XS-M => L:60cm W:35cm H:15cm GW:6.40kg NW:5.30kg L-XL => L:65cm W:40cm H:15cm GW:7.30kg NW:6.00kg XXL-3XL => L:70cm W:45cm H:15cm GW:8.10kg NW:6.70kg